

User instructions | AXiS 64 Firmware Updater

1 | Windows XP installation

- ❑ Install drivers for USB to serial converter (we recommend you follow the manufacture's instruction, a default guide for reference purposes has been provide in section 5).
- ❑ Double-click on the 'AXiS 64 Firmware Updater.exe' file.
- ❑ Click the 'Next >' button to continue with the installation.
- ❑ Select the destination folder you wish the AXiS 64 Firmware Updater software to be installed to (We recommend using the default setting). Click the 'Next >' button.
- ❑ Select where you would like setup to place the program's shortcut in the Start Menu (we recommend using the default setting). Click the 'Next >' button.
- ❑ Select whether you require setup to create a desktop icon, or not, by ticking the 'Create a desktop icon' tick box accordingly.
- ❑ Click the 'Next >' button.
- ❑ Finally click the 'Install' button.

Once the AXiS 64 Firmware Updater software has been installed, the Java™ 2 runtime environment (v1.4.2_13) also needs to be added system. This installation for this will start automatically.

If the Java™ 2 runtime environment HAS previously been installed:

- ❑ Read the license agreement & agree to the terms by selecting the 'I accept the terms in the license agreement' option (providing you do accept the terms). Click the 'Next' button.
- ❑ Select which setup type you require (We recommend using the default option). Click the 'Next' button.
- ❑ Click the 'Finish' button.
- ❑ You may then be asked to restart the system, click the 'Yes' button.

If the Java™ 2 runtime environment HAS NOT previously been installed:

- ❑ Click the 'Next >' button to continue with the installation.
- ❑ The option to modify, repair or remove the program is then given. Select the 'Modify' option. Click the 'Next >' button.
- ❑ Select which program features you want to be installed (We recommend using the default setting). Click the 'Next >' button.
- ❑ Click the 'Finish' button.
- ❑ You may then be asked to restart the system, click the 'Yes' button.

2 | Mac OS X installation

- ❑ Install drivers for USB to serial converter (we recommend you follow the manufacture's instruction, a default guide for reference purposes has been provide in section 5).

Which Updater shall I use?

To discover which installation should be used on your machine, determine the Version of your Mac OS.

- ❑ Select the "About this Mac" option from the Apple Menu located towards the top left of your screen. A window will appear with MAC OS X & just below your Version number.

If your Mac OS X version is 10.3.9 or above, use
AXiS 64 Firmware Updater Universal.pkg

If your Mac OS X version is 10.3.8 or below, use
AXiS 64 Firmware Updater PowerPC.pkg

To install your AXiS 64 Firmware Updater, double-click the relevant .pkg file.

- ❑ Read Welcome Screen & click 'Continue' button.
- ❑ Select the 'Machintosh HD' & click on the 'Continue' button.
- ❑ Click the 'Install' button.
- ❑ Once installation is complete, the AXiS 64 Firmware Updater software can be located in Applications.



3 | Running the AXIS 64 Firmware Updater software

In Windows XP:

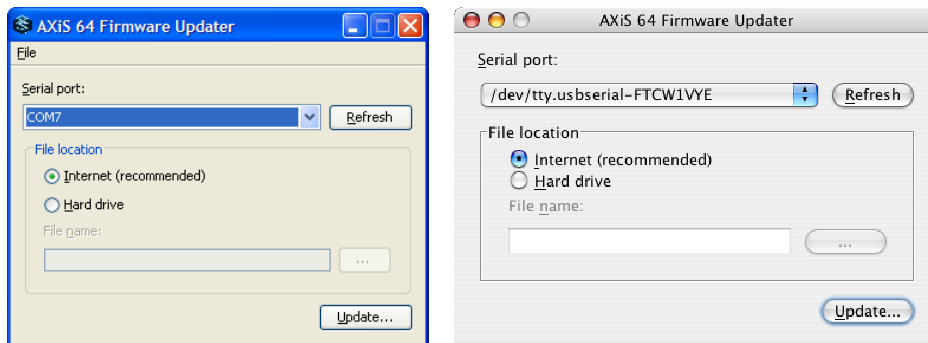
- Double-click on the 'AXiS 64 Firmware Updater' icon on the desktop, or alternatively:
- Click the 'Start' button on the Windows taskbar, select 'All Programs', select 'AXiS 64 Firmware Updater', then click on the 'AXiS 64 Firmware Updater' option.

In Mac OS X:

- Navigate to the 'Applications' folder on the Macintosh HD.
- Select the 'AXiS 64 Firmware Updater' option.

4 | Using the AXiS 64 Firmware Updater software

- On start up you will be presented with the Settings window.
- Select which Serial port you wish to use.



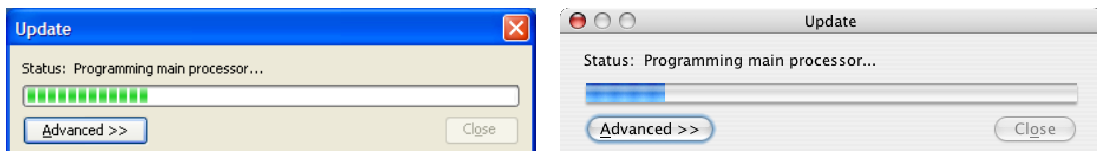
- The next task is to select which location you want to download the update firmware file from.

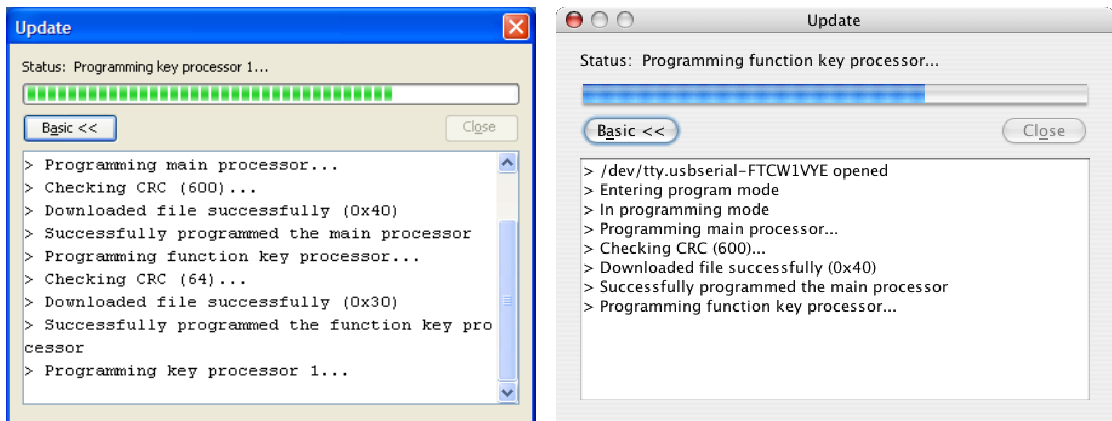
Internet (recommended)

- Selecting this option gets the latest firmware file from the C-Thru Music website.

Hard drive

- Selecting this option allows you to accessing the file from the hard drive or external media connected to the machine.
- Click on, the now enabled, drop-down box.
- A window will appear allowing you to navigate the machine's file system.
- Located the desired firmware '.zip' file & click the 'Open' button.
- Once you are happy with the file location choice, **ensure the AXiS 64 natural keyboard is powered up & connected to the machine**, then click the 'Update...' button. The Update window will now appear, detailing the status of the update.
- You can monitor the progress of the update by viewing the progress bar & the associated status messages.
- For more detailed download information click the 'Advanced >>' button for real-time messaging. *This window can be hidden by clicking the 'Basic <<' button.*





- ❑ Close to completing the download of the firmware, observe the LCD on the AXiS 64 natural keyboard. When the download completes, the version number of the firmware will flash up on screen.
- ❑ It is now safe to close/quit the software.

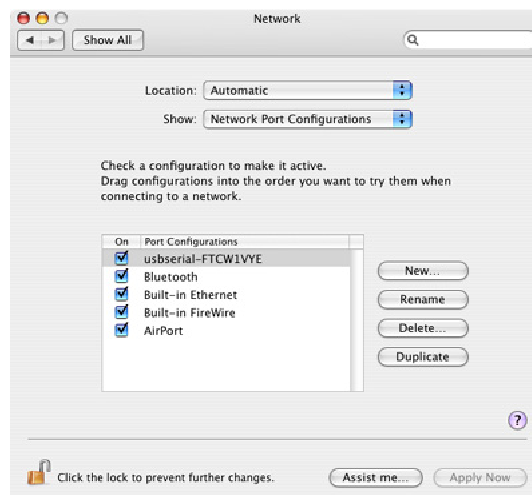
5 | Default steps to install USB to Serial Converter

Have NOT already installed drivers for your USB to Serial converter:

- ❑ Install the drivers for your USB to Serial converter. To aid clarity, the instructions will assume you are using the FTDI USB to Serial converter device. If you are NOT, please amend your actions according to the manufacturers guidelines.
- ❑ Restart your Mac machine.
- ❑ Plug in the USB to Serial converter.
- ❑ Navigate to 'System Preferences' on the Apple Menu bar & open.
- ❑ Select 'Network' from Internet & Network.
- ❑ A pop-up window will be displayed stating: "New port detected usbserial-FTCW1VYE", click 'OK'.
- ❑ Select 'Network Port Configurations' from the Show drop-down box.
- ❑ Tick the 'On' tick-box next to the 'usbserial-FTCW1VYE' option.
- ❑ Click the 'Apply Now' button.
- ❑ Proceed to the Software install instructions.

Already have installed drivers of your USB to Serial converter:

- ❑ Check the drivers are activated by:
- ❑ Navigating to 'System Preferences' on the Apple Menu bar & open.
- ❑ Select 'Network' from Internet & Network.
- ❑ Click on the 'Show' drop-down box & select 'Network Port Configurations'
- ❑ Ensure the usbserial-FTCW1VYE 'On' tick-box is ticked.
- ❑ Proceed to section '2 | Mac OS X installation' instructions.



- If it is NOT
 - Tick the usbserial-FTCW1VYE 'On' tick-box.
 - Press the 'Apply Now' button.
 - Restart your Mac.
 - Proceed to section '2 | Mac OS X installation' instructions.

